

# ICS Chillers

Industrial Chiller Specialists, Inc.

Princeton, MN - USA

[www.icschillers.com](http://www.icschillers.com)

## Industrial Packaged Chillers

Where Commercial Ends.....Industrial Quality Begins



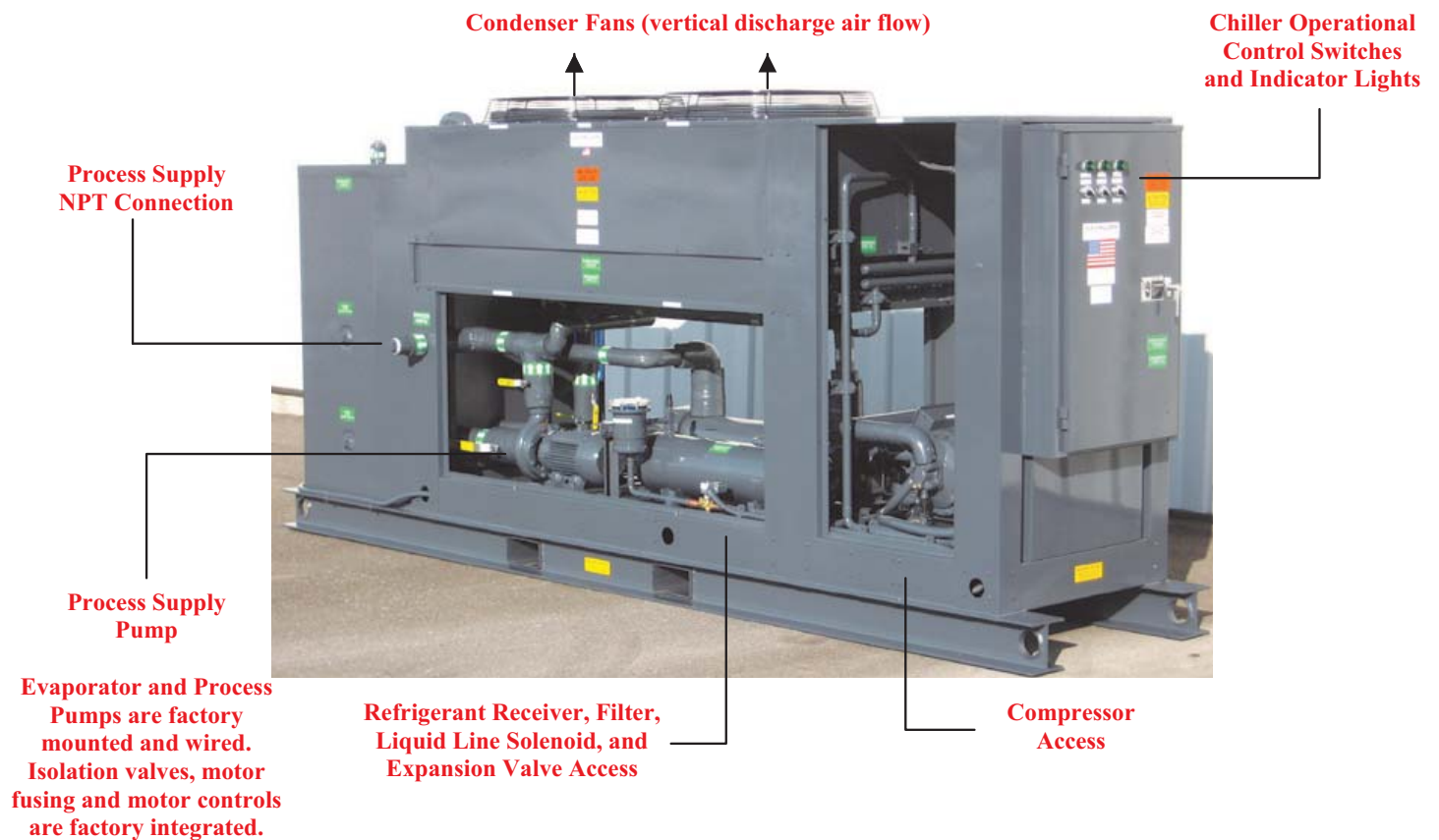
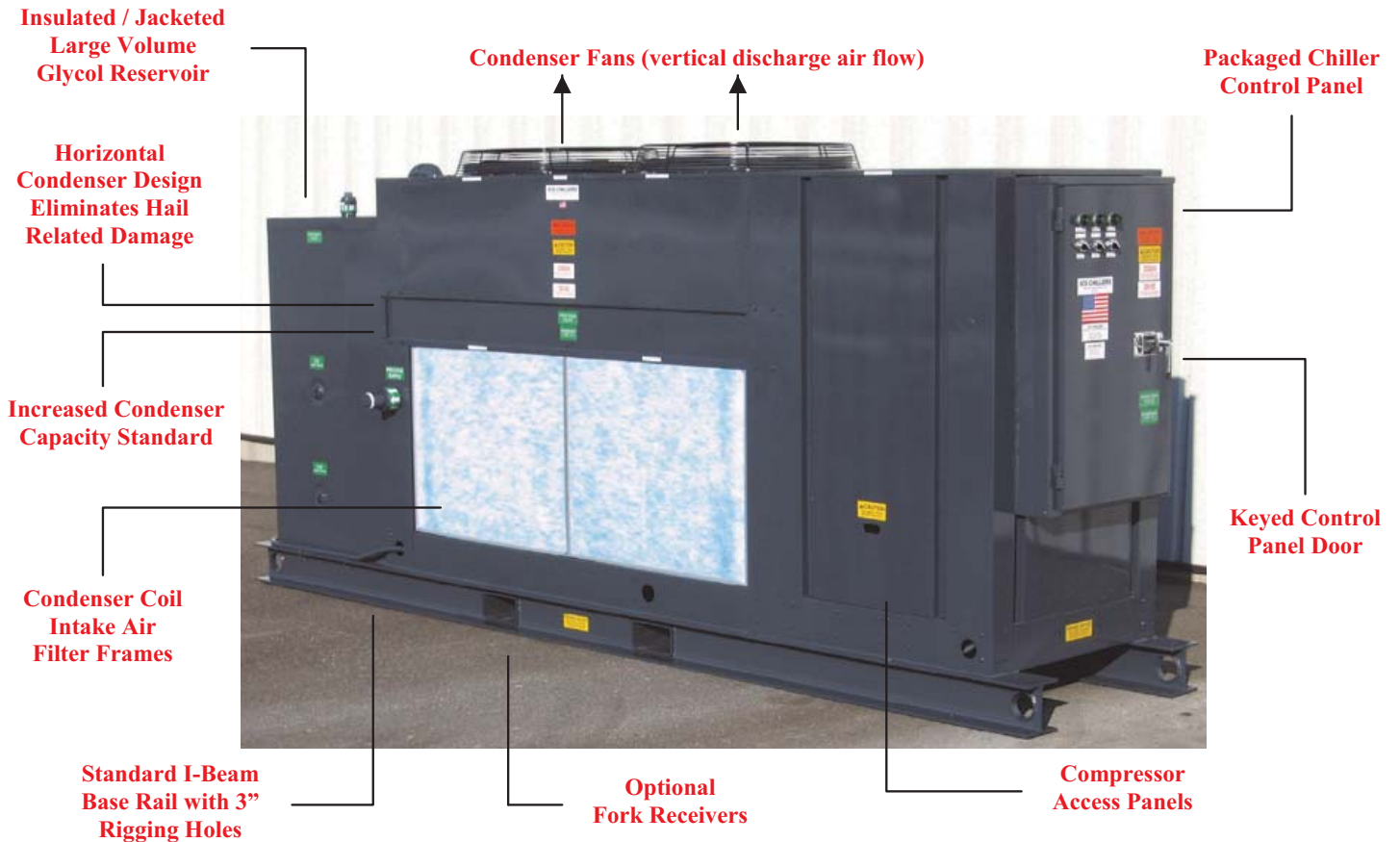
**Packaged Chillers Designed for Industrial Manufacturing  
and Process Cooling Applications**

**Air-Cooled or Water-Cooled Industrial Packaged Chillers  
Available in Single Units From 3 HP to 160 HP**

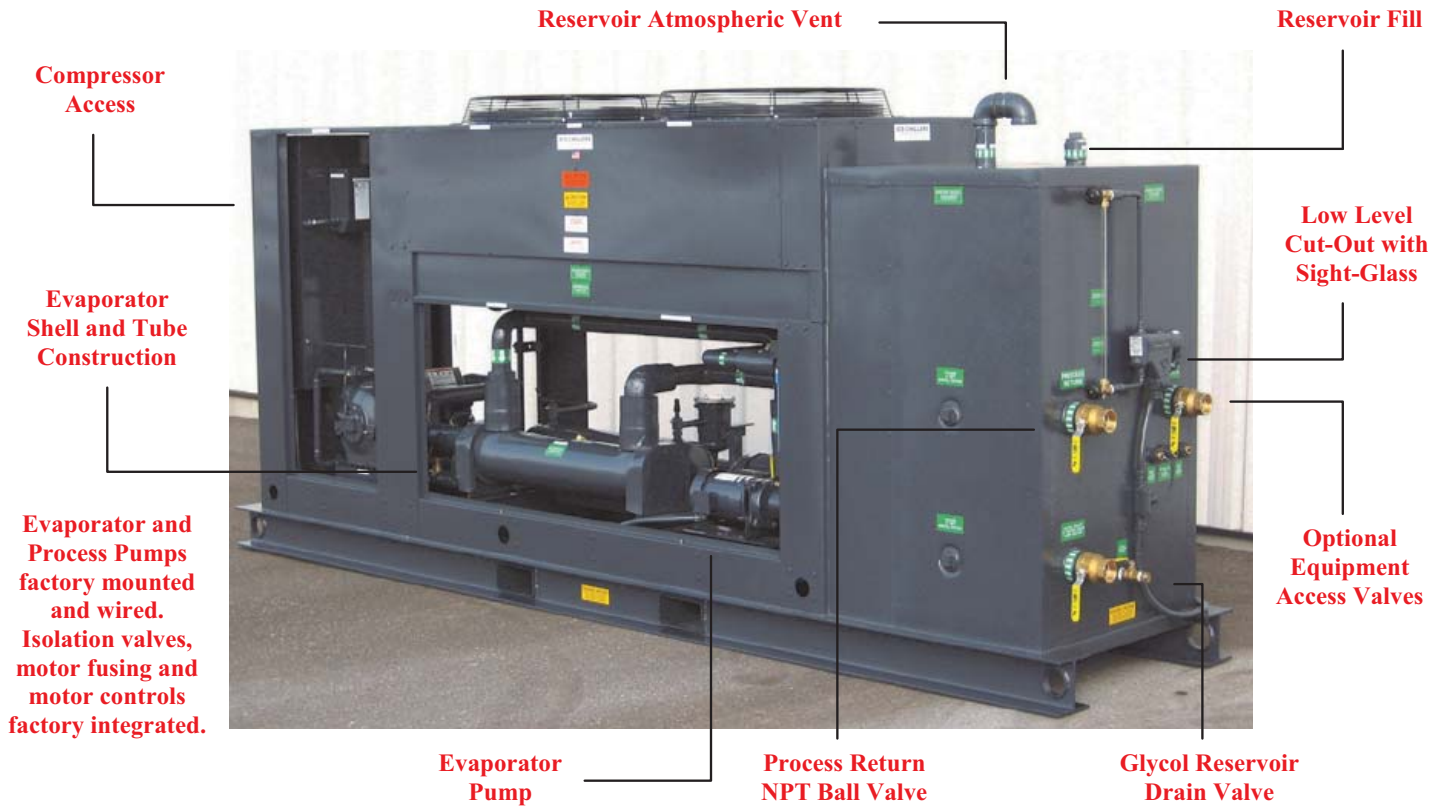
\* Larger Capacity Systems Utilize Multiple Chillers for Redundancy Benefits



# Industrial Design and Construction



# Industrial Control and Protection

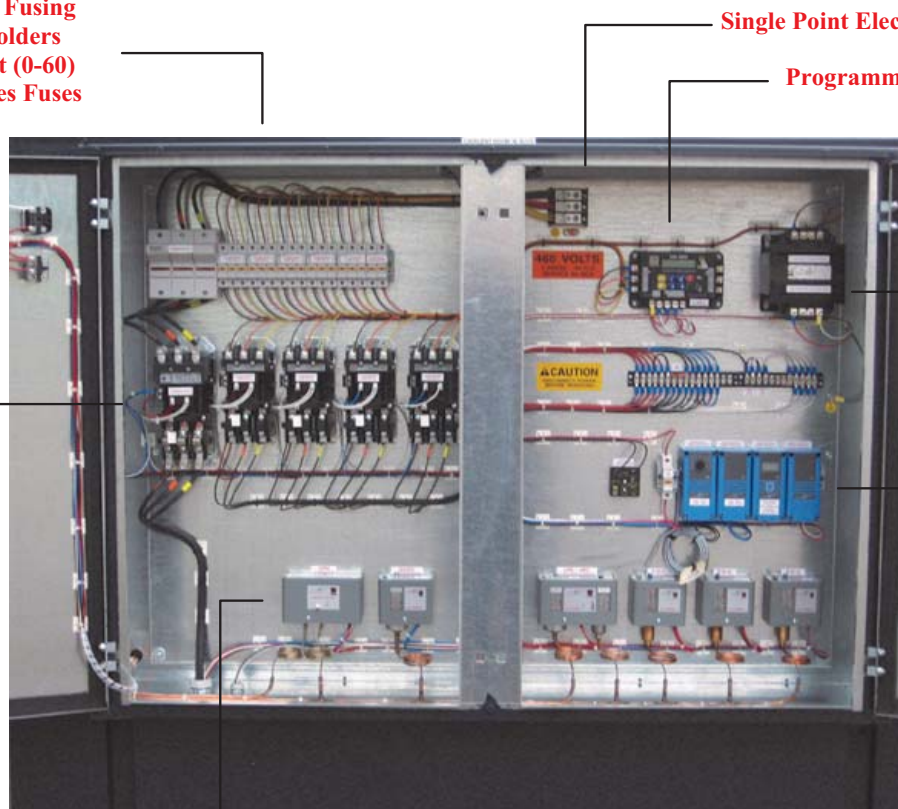


Independent Motor Fusing  
Ultra-Safe Fuse Holders  
with Indicator Light (0-60)  
Class CC and J Series Fuses

Allen Bradley  
800T Series  
Control Switches  
and Operational  
Indicator Lights

Allen Bradley  
509 Series NEMA  
Motor Starters

Integrated Control  
for Compressor,  
Pump Motors, and  
Fan Motors



Single Point Electrical Distribution Block

Programmable Voltage Monitor

Integrated 115 Volt  
Control Transformer  
with Primary and  
Secondary Fusing

Johnson Controls  
A350 Series  
Temp Controls

Optional A419 Series  
based on staging  
requirements

Johnson Controls—Industrial Pressure Controls  
P45NC—Oil Pressure Safety  
P29NC—Low Pressure Safety  
P70AA—High Pressure Fan Cycling  
P70CA—Low Pressure Unloading  
P70MA—Dual Pressure Control  
(Low Pressure Operate / High Pressure Safety)



# ICS Chillers

Industrial Chiller Specialists, Inc

Princeton, MN - USA  
www.icschillers.com

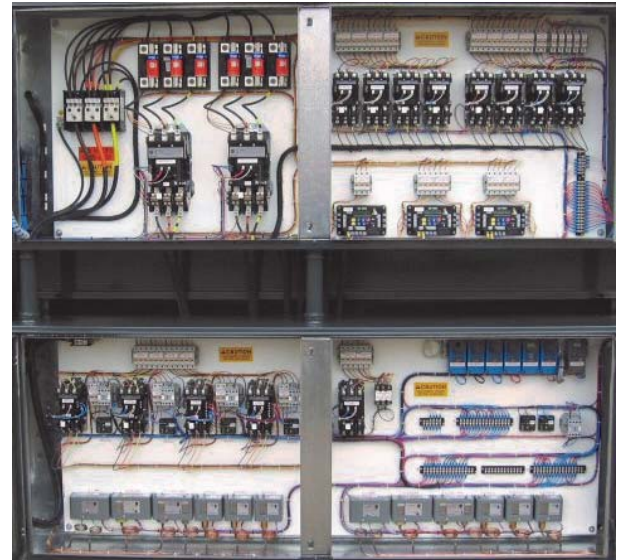


## ICS Chillers - Industrial Packaged Chillers

- Process Cooling and Manufacturing
- Industrial Quality and Reliability
- Evaporator Pump and Controls
- Industrial Design / Customer Specific
- Integrated Glycol Reservoir and Pumps
- Process Supply Pump and Controls

### ICS Chillers - Design Features

- Industrial Construction and Control
- Independent Motor Fusing and NEMA Motor Controls
- No Specialized or OEM Components, Parts, or Controllers
- Unit Components and Controls Available at the Wholesale Level Nationwide
- ETL / UL-1995 / CSA-C22 Listed



### ICS Chillers - Packaged Chiller Options and Accessories

- 50 Hz Models Available
- Redundant Compressor Circuits
- Winter Chillers - Economizers
- Water-Cooled Condensers
- Redundant Pumps and Controls
- Auxiliary Pump Stations and HX